



LINEAR ACTUATOR

BBS35W2

BBS35W2 Linear Actuator

BBS35W2 is a kind of actuator with low noise, compact installation size, high speed and high IP grade(IPX4). It has following models:
BBS35W2-3000N; BBS35W2-2000N; BBS35W2-1000N.



Stock Code: BBS35W2-1-14-24-50-170-4s-H-G
BBS35W2-1-14-24-100-220-4s-V-G
BBS35W2-1-14-24-150-270-4s-V-G
BBS35W2-1-14-24-200-320-4s-H-G
BBS35W2-1-14-24-300-420-4s-H-G

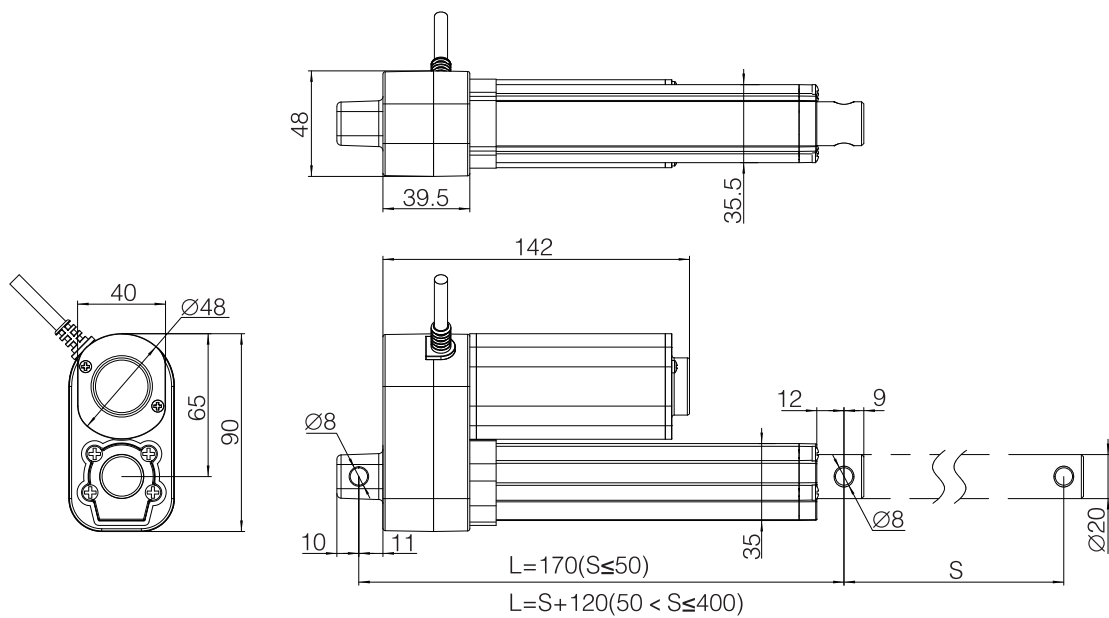
BBS35W2-3-5-24-100-220-4s-V-G
BBS35W2-3-5-24-150-270-4s-V-G
BBS35W2-3-5-24-200-320-4s-V-G
BBS35W2-3-5-24-250-370-4s-V-G
BBS35W2-3-5-24-300-420-4s-H-G

Features And Options

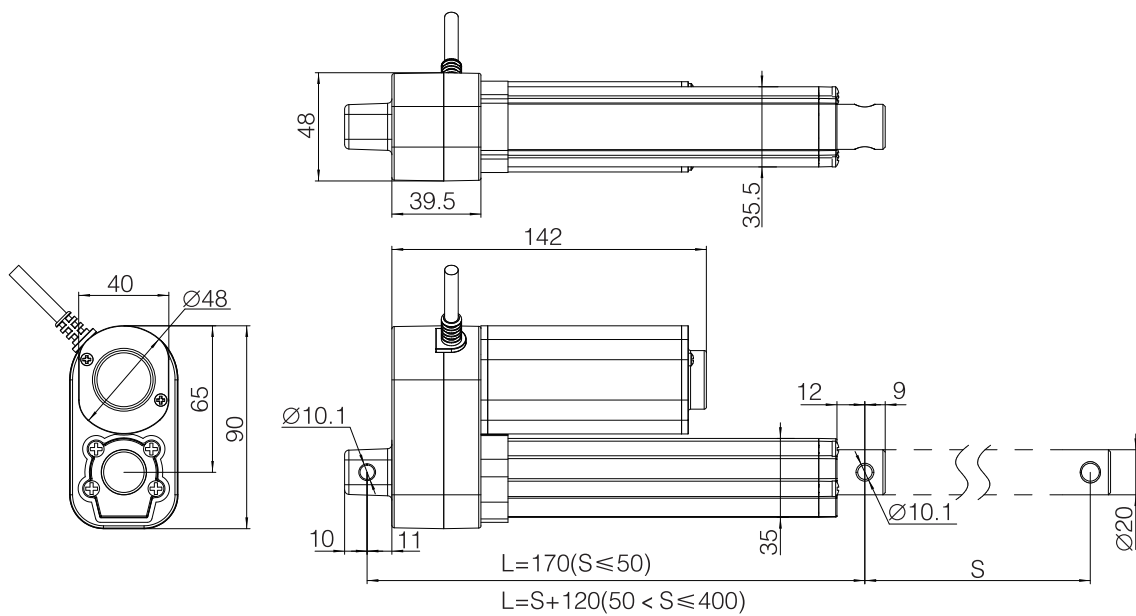
Dynamic load push(N):	3000 2000 1000
Dynamic load pull (N):	3000 2000 1000
Colour:	Silver gray
IP Grade:	IPX4
Stroke Length:	3000N: 50-250mm (in steps of 4mm) 2000N: 50-400mm (in steps of 4mm) 1000N: 50-400mm (in steps of 4mm)
Installation Dimensions:	L=170 (S ≤ 50) L=S+120 (50 < S ≤ 400)
Noise Level:	≤ 48dB (ambient noise level ≤ 40dB)
Optional:	Hall sensor
Limit Switch:	Built-in (electrical)
Weight:	About 1.7kg (different stroke length and installation dimensions with different weight)
Static bending moment:	lateral load is not allowed
Duty Cycle:	10%, max. 2min.continuous working and 18 min.off
Approval:	IEC60601-1: 2012 EN 60601-1: 2006+A12:2014 ANSI/AAMI ES60601-1: 2005/(R)2012 and A1: 2012 C1:2009/(R)2012 and A2: 2010/(R)2012

Dimension Drawing

Top clevis F47, end clevis 37



Top clevis 80, end clevis 40

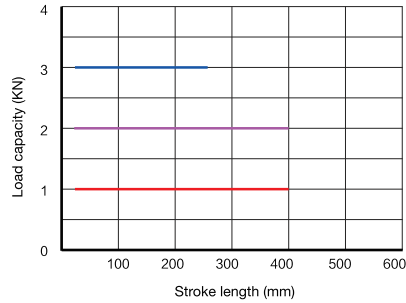


Technical Data-Standard Value

Input voltage (VDC)	Spindle pitch (mm)	Max. load in push (N)	Max. load in pull (N)	Mechanical self-lock (N)	Speed at no load/full load (mm/s)	Current at full load (A)
12	10	1000	1000	600	20/13.5	6
12	7.5	1000	1000	1000	13/8.5	6
12	4	1000	1000	1000	8/5.5	6
12	20	1000	1000	500	20/10	3
24	10	1000	1000	600	9.9/6.5	3
24	7.5	2000	2000	1500	8.3/3.5	3
24	4	3000	3000	3000	4.4/2	3
24	10	1000	1000	600	18.2/13.5	5
24	7.5	2000	2000	1500	14.1/9	5
24	4	3000	3000	3000	7.4/5	5
29	10	1000	1000	600	12/7.9	3
29	7.5	2000	2000	1500	10/4.2	3
29	4	3000	3000	3000	5.3/2.4	3
29	10	1000	1000	600	22/16.3	5
29	7.5	2000	2000	1500	17/10.9	5
29	4	3000	3000	3000	9/6	5
48	10	1000	1000	600	21/14	5
48	7.5	2000	2000	1500	15/10	5
48	4	3000	3000	3000	8.5/6	5

Remarks: It can achieve better self-locking ability with Bibus control box;
The above data is the standard value of the test data (inspection specification) at room temperature of 25°C.

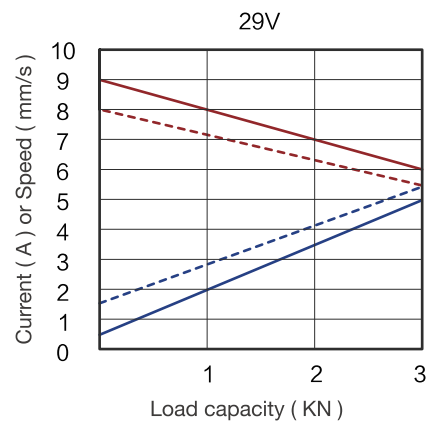
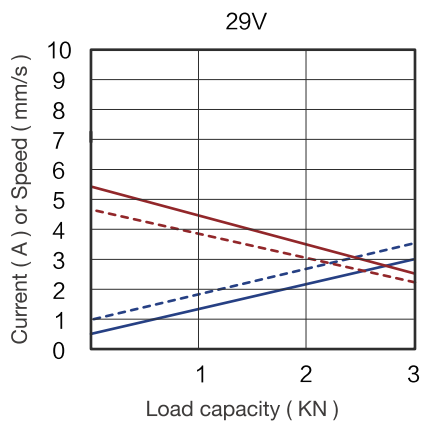
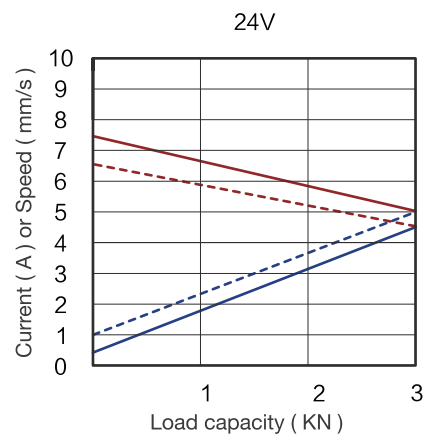
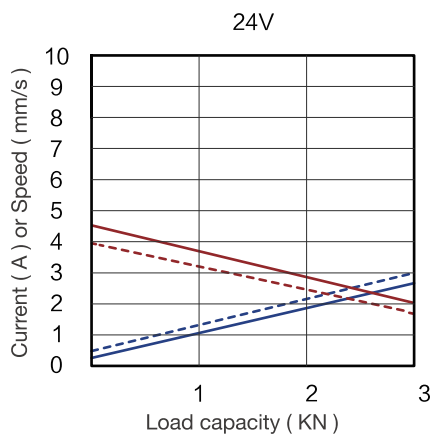
Diagram of relationship between stroke length and load



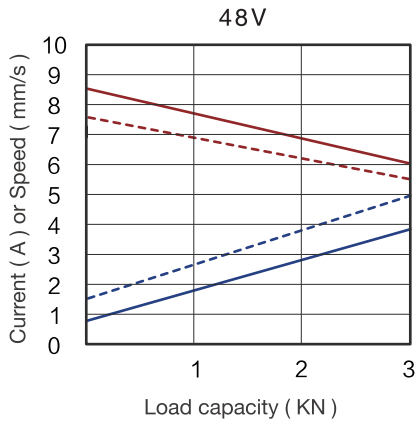
Characteristic Curve

3000N

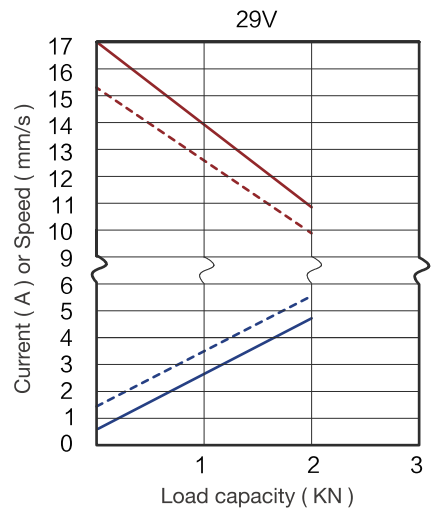
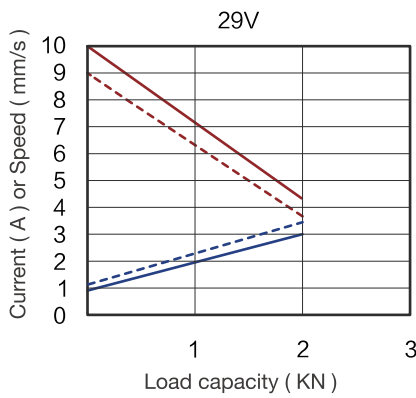
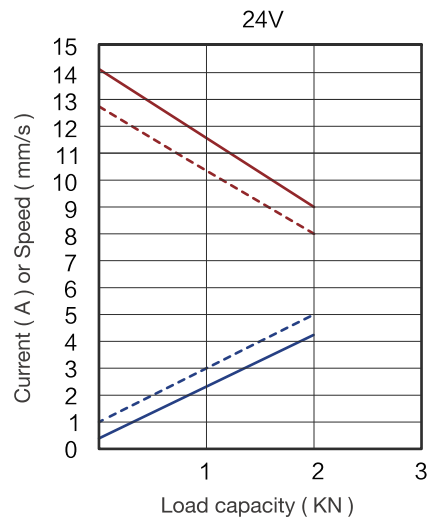
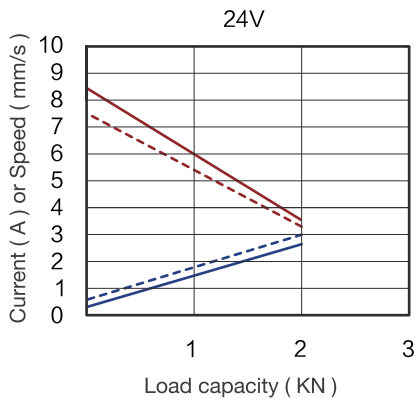
Typical speed ———
Min. speed - - - - -
Typical current ———
Max. current - - - - -



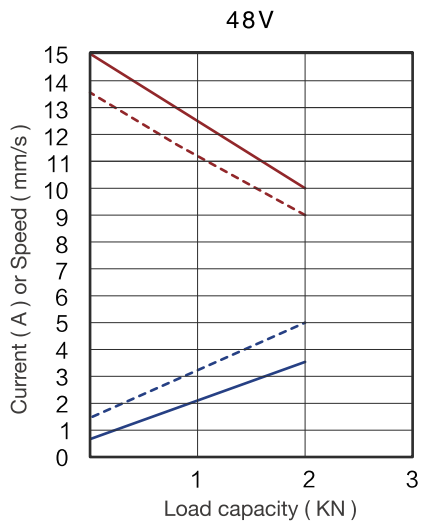
Typical speed ———
Min. speed - - - - -
Typical current ———
Max. current - - - - -



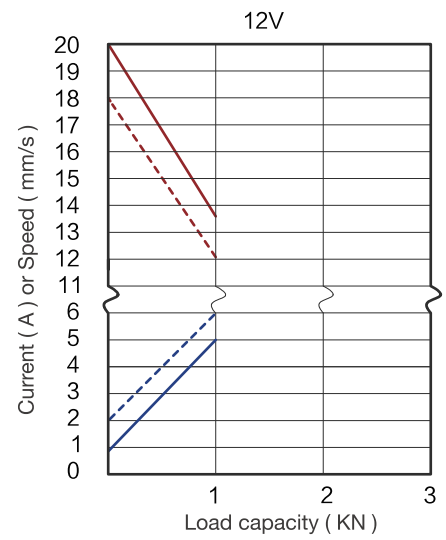
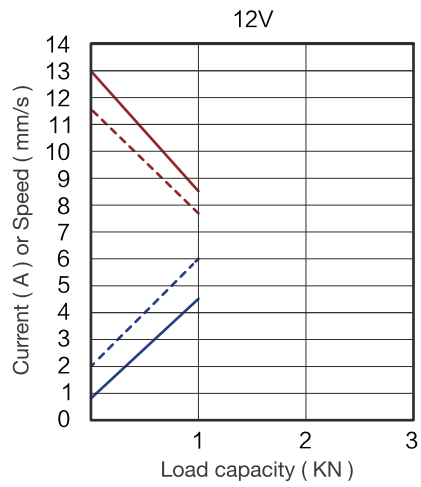
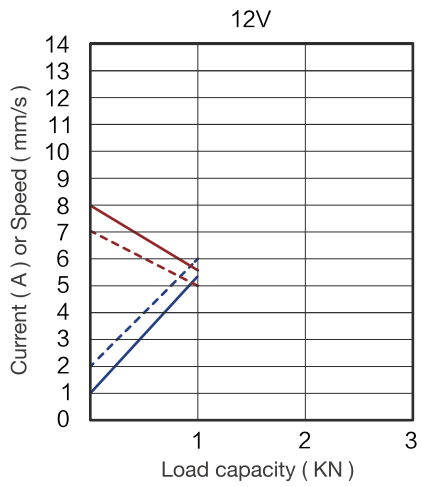
2000N



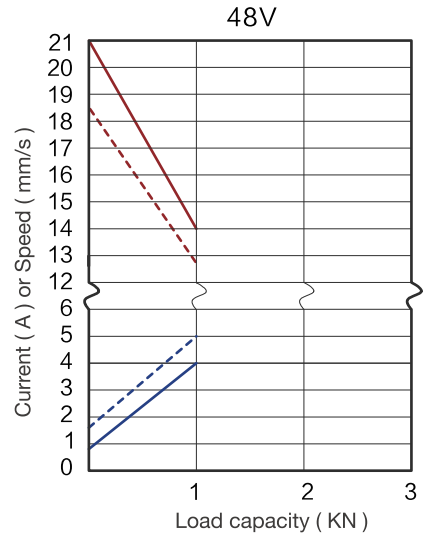
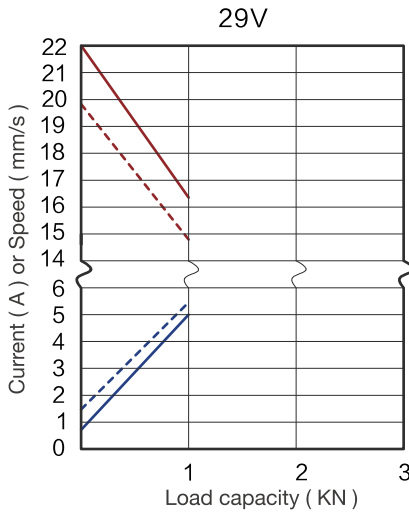
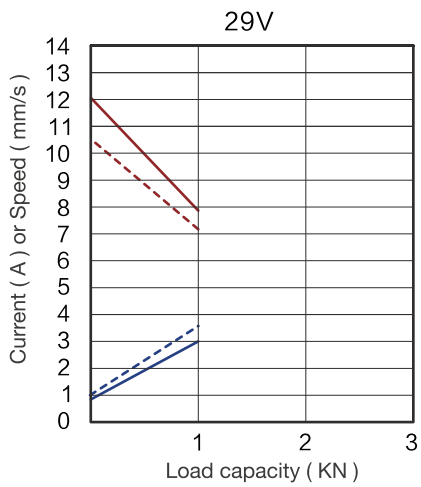
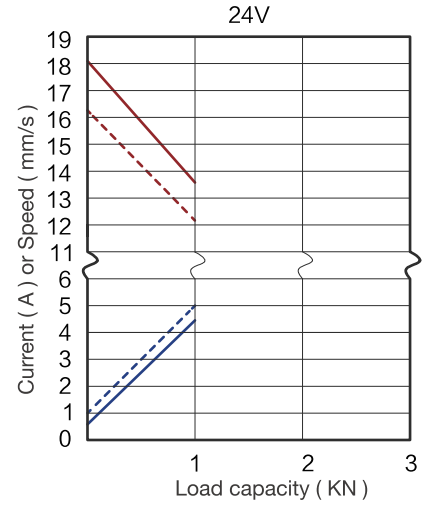
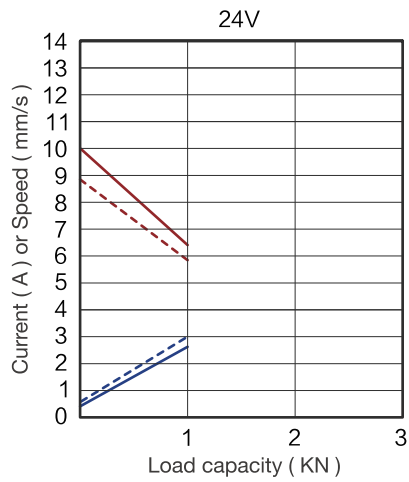
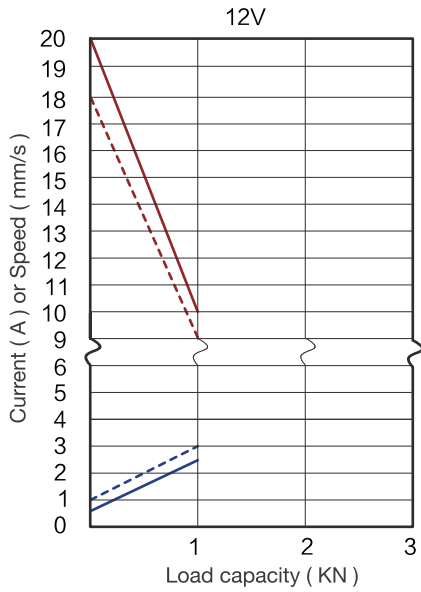
Typical speed ———
 Min. speed - - - - -
 Typical current ———
 Max. current - - - - -



1000N



Typical speed ———
Min. speed - - - -
Typical current ———
Max. current - - - -



Ordering Examples

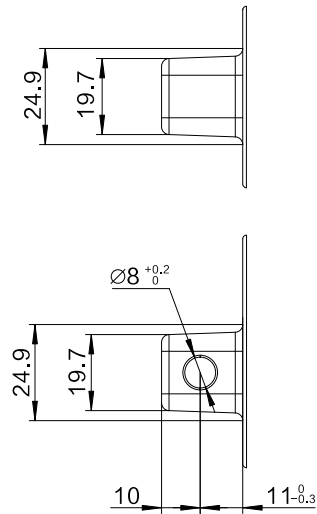
Take **BBS35W2028D524300/420VG80L400020D5** for example

Model	BBS35W2	
Optional features	X	0 = Standard / Y = Hall sensor
Load in push	X	3 = 3000N / 2 = 2000N / 1 = 1000N
Speed at full load	X	5D5 = 5.5mm/s 8D5 = 8.5mm/s 13D5 = 13.5mm/s
Input voltage	XX	24 = 24VDC
Stroke length/ Installation dimension	XXX/XXX	Stroke length = XXX Installation dimension = XXX
Clevis directions	X	H = H direction / V = V direction
Color	X	G = silver gray
End clevis specification	XX	37 = W-type end clevis, hole diameter 8.0 40 = W-type end clevis, hole diameter 10.1
End clevis material	X	L = Aluminium alloy
Top clevis specification	XX	F47 = W-type, hole diameter of top clevis 8.0 80 = W-type, hole diameter of top clevis 10.1
Brake specification	X	0 = Standard
Type of plug and cable	XX	02 = 4-pin DIN plug 10 = 5-pin DIN plug
Cable length	XXX	2D0 = 2m / 0D5 = 0.5m

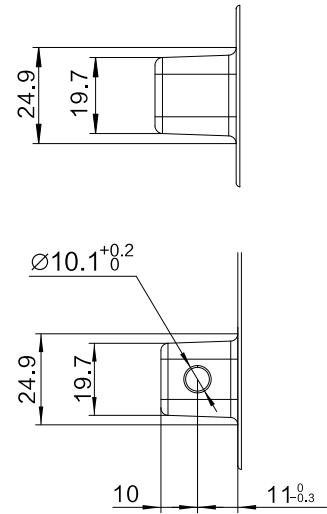
Ordering Details

Dimension drawing of clevis

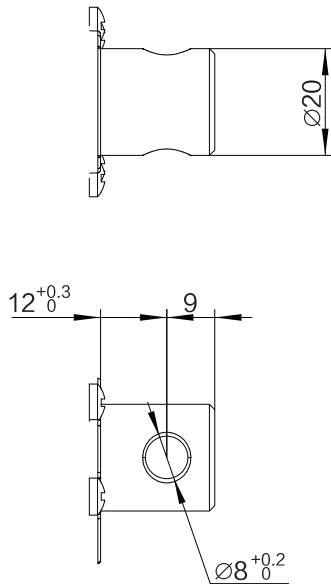
End clevis: 37



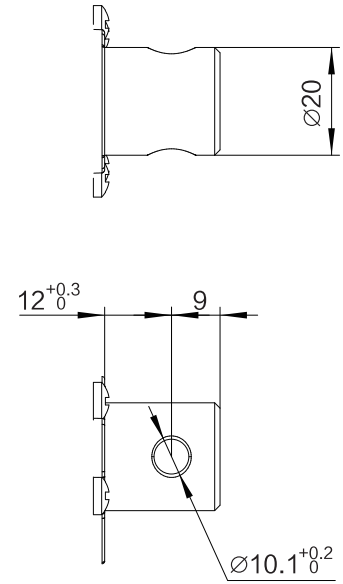
End clevis: 40



Top clevis:F47



Top clevis: 80



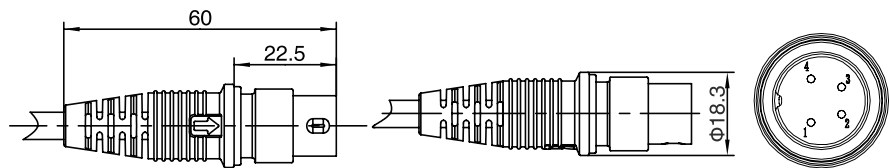
Motor wire

4-pin straight plug (standard)

Matching control box :

BBSB35Q / BBSB35T / BBSB35R /
BBSB35R1 / BBSB35S

Pin	Color	Function
1	NC	Not connected
2	Brown	power with positive voltage, actuator going down
3	Blue	power with positive voltage, actuator going up
4	NC	Not connected
Outer Circle	NC	Not connected

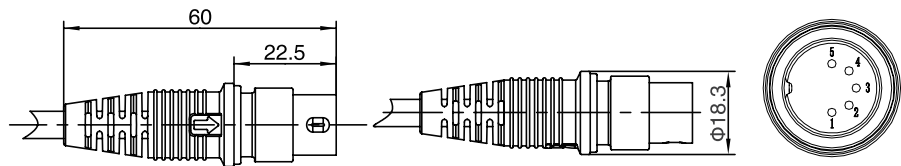


**5 pin DIN plug
(actuators with Hall sensor)**

Matching control box :

BBSB35Q / BBSB35T / BBSB35R
BBSB35R1 / BBSB35S

Pin	Color	Function
1	Red	5V
2	Brown	power with positive voltage, actuator going down
3	Black	GND
4	Blue	power with positive voltage, actuator going up
5	Yellow	Hall sensor signal 1
Outer Circle	Orange	Hall sensor signal 2





BIBUS ENDÜSTRİYEL A.Ş.

İkitelli OSB Bedrettin Dalan Bulvarı Vip Plaza
Kat:2 No:43 Başakşehir/İstanbul

Tel. 444 20 38

Fax 0212 249 88 34

info@bibus.com.tr

www.bibus.com.tr

