



LINEAR ACTUATOR

BBS35W5

BBS35W5 Linear Actuator

BBS35W5 is a kind of actuator with low noise, compact installation size and high speed. It has following specifications: BBS35W5-3000N, BBS35W5-2000N, BBS35W5-1000N.



Stock Code: BBS35W5-3-5.5-24-100-220-4s-V-B
 BBS35W5-3-5.5-24-150-270-4s-V-B
 BBS35W5-3-5.5-24-200-320-4s-V-B
 BBS35W5-3-5.5-24-250-370-4s-V-B
 BBS35W5-3-5.5-24-300-420-4s-V-B

Features And Options

Dynamic load push(N):	3000 2000 1000
Dynamic load pull (N):	3000 2000 1000
Colour:	Black
IP Grade:	Max. IP68
Stroke Length:	3000N: 50-250mm 2000N: 50-400mm 1000N: 50-400mm
Installation Dimensions:	L = 170(S ≤ 50) L = S+120(50 ≤ S ≤ 400)
Noise Level:	≤ 55dB, (environmental noise ≤ 40dB)
optional:	Hall sensor
Limit Switch:	Built-in (electrical)
Weight:	About 1.413kg (different stroke length and installation dimensions with different weight)
Static bending moment:	lateral load is not allowed
Approval:	IEC60601-1: 2012 EN 60601-1: 2006+A12: 2014 ANSI/AAMI ES60601-1: 2005/(R)2012 and A1: 2012 C1: 2009/(R)2012 and A2: 2010/(R)2012

Usage

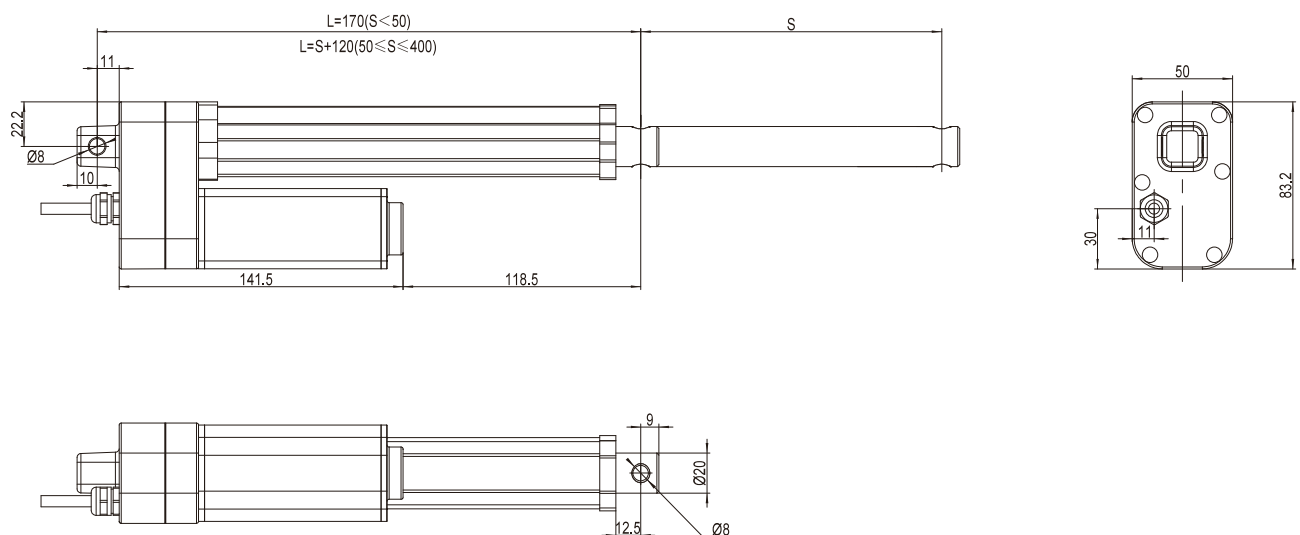
Duty Cycle:	10%, max. 2min.continuous working and 18 min.off
Operating Temperature:	+5 °C to +40°C
Reserve Temperature:	-10°C to 50°C
Supporting Control Box:	match with BIBUS control box
Relative Humidity:	20% to 90% at 30 °C, non condensing
Atmospheric Pressure:	700 to1060hPa

Additional use in industry

Duty Cycle:	10%, max. 2min.continuous working and 18 min.off
Operating Temperature:	-30°C~70°C, IP68 test qualified

The vibration standard is GBT31467.3-2015. After the vibration is completed, the IP68 test is qualified, and the linear actuator works normally.
 After 480 hours of salt spray test, the IP68 test is qualified, and the linear actuator works normally.
 The linear actuator extends and retracts once, the push-pull force is 200KG, the number of tests is 20,000 times, the IP68 test is qualified, and the linear actuator works normally.

Dimension Drawing

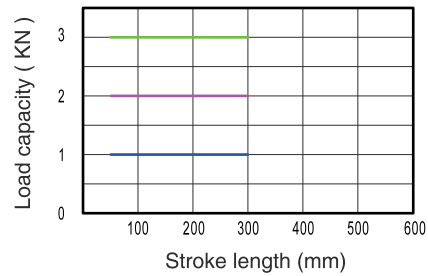


Technical Data-Standard Value

Input voltage (VDC)	Spindle pitch (mm)	Max. load in push (N)	Max. load in pull (N)	Mechanical self-lock (N)	Speed at no load/full load (mm/s)	Current at full load (A)
12	4	2000	2000	1500	7/4.5	≤6
24	4	3000	3000	3000	7.4/4.8	≤5
24	7.5	2000	2000	1500	13.2/8.3	≤5
24	10	1000	1000	600	18.2/11	≤4

Remarks: It can achieve better self-locking ability with Bibus control box;
The above data is the standard value of the test data (inspection specification) at room temperature of 25°C.

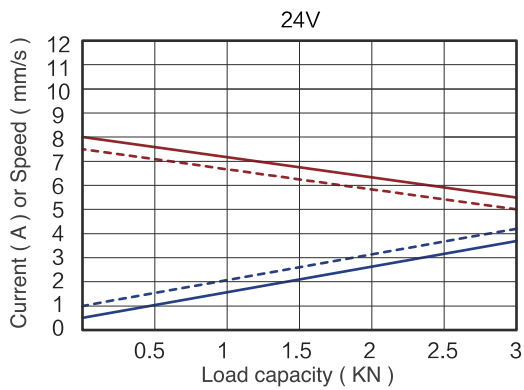
Diagram of relationship between stroke length and load



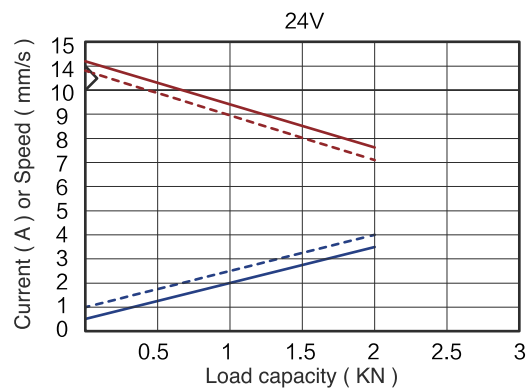
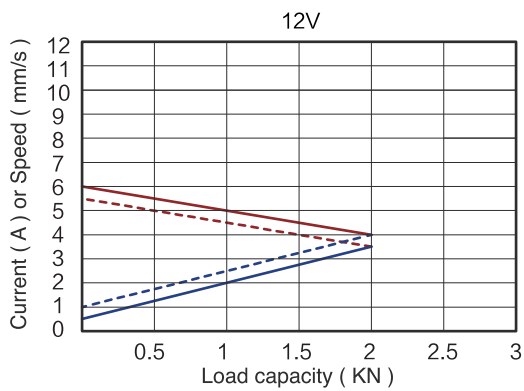
Characteristic Curve

Typical speed ———
 Min. speed - - - - -
 Typical current ———
 Max. current - - - - -

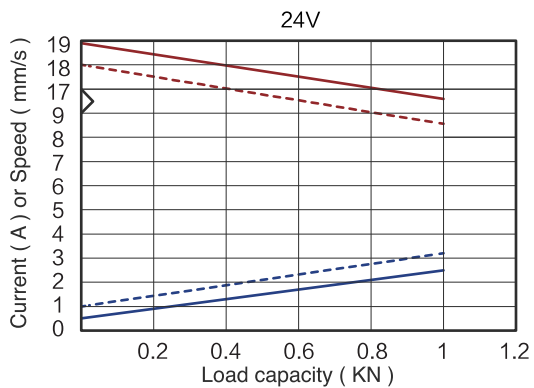
3000N



2000N



3000N



Ordering Examples

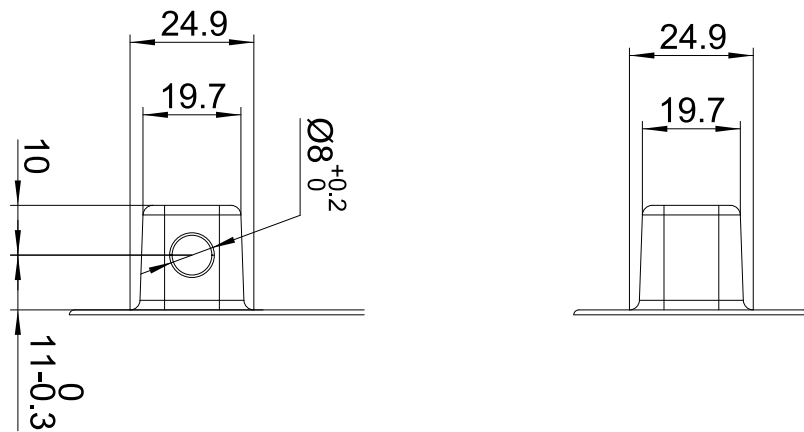
Take **BBS35W502412150/270/VB37LF470020D5** for example

Model	BBS35W5	
Optional features	X	0 = Standard / Y = Hall sensor
Load in push	X	3 = 3000N / 2 = 2000N / 1 = 1000N
Speed at full load	X	4D5 = 4.5mm/s
Input voltage	XX	12 = 12VDC / 24 = 24VDC
Stroke length/ Installation dimension	XXX/XXX	Stroke length = XXX Installation dimension = XXX
Clevis directions	X	H = H direction / V = V direction
Color	X	G = Black
End clevis specification	X	37 = W-type end clevis, hole diameter 8.0
End clevis material	X	L = Aluminium alloy
Top clevis specification	X	F47 = W-type, hole diameter of top clevis 8.0
Brake specification	X	0 = Standard
Type of plug and cable	XX	02 = 4-pin DIN plug 10 = 5-pin DIN plug
Cable length	XXX	2D0 = 2m / 0D5 = 0.5m

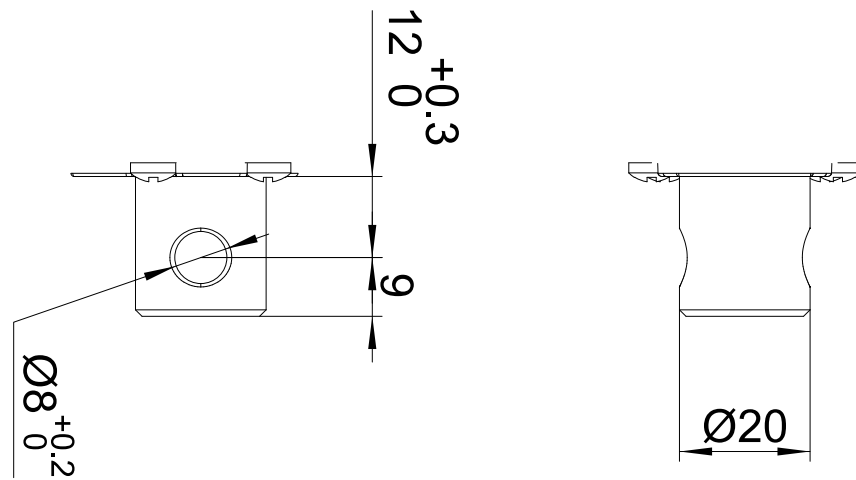
Ordering Details

Dimension drawing of clevis

End clevis: 37



Top clevis: F47



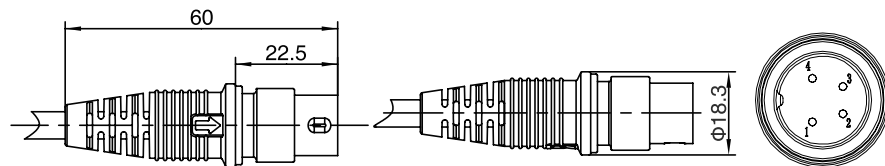
Motor wire

4-pin straight plug (standard)

Matching control box :

BBSB35Q / BBSB35T / BBSB35R /
BBSB35R1 / BBSB35S

Pin	Color	Function
1	NC	Not connected
2	Brown	power with positive voltage, actuator going down
3	Blue	power with positive voltage, actuator going up
4	NC	Not connected
Outer Circle	NC	Not connected

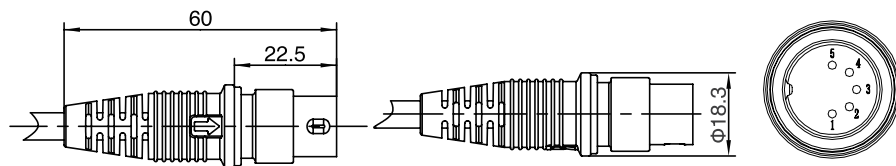


**5 pin DIN plug
(actuators with Hall sensor)**

Matching control box :

BBSB35Q / BBSB35T / BBSB35R
BBSB35R1 / BBSB35S

Pin	Color	Function
1	Red	5V
2	Brown	power with positive voltage, actuator going down
3	Black	GND
4	Blue	power with positive voltage, actuator going up
5	Yellow	Hall sensor signal 1
Outer Circle	Orange	Hall sensor signal 2





BIBUS ENDÜSTRİYEL A.Ş.

İkitelli OSB Bedrettin Dalan Bulvarı Vip Plaza
Kat:2 No:43 Başakşehir/İstanbul

Tel. 444 20 38

Fax 0212 249 88 34

info@bibus.com.tr

www.bibus.com.tr

