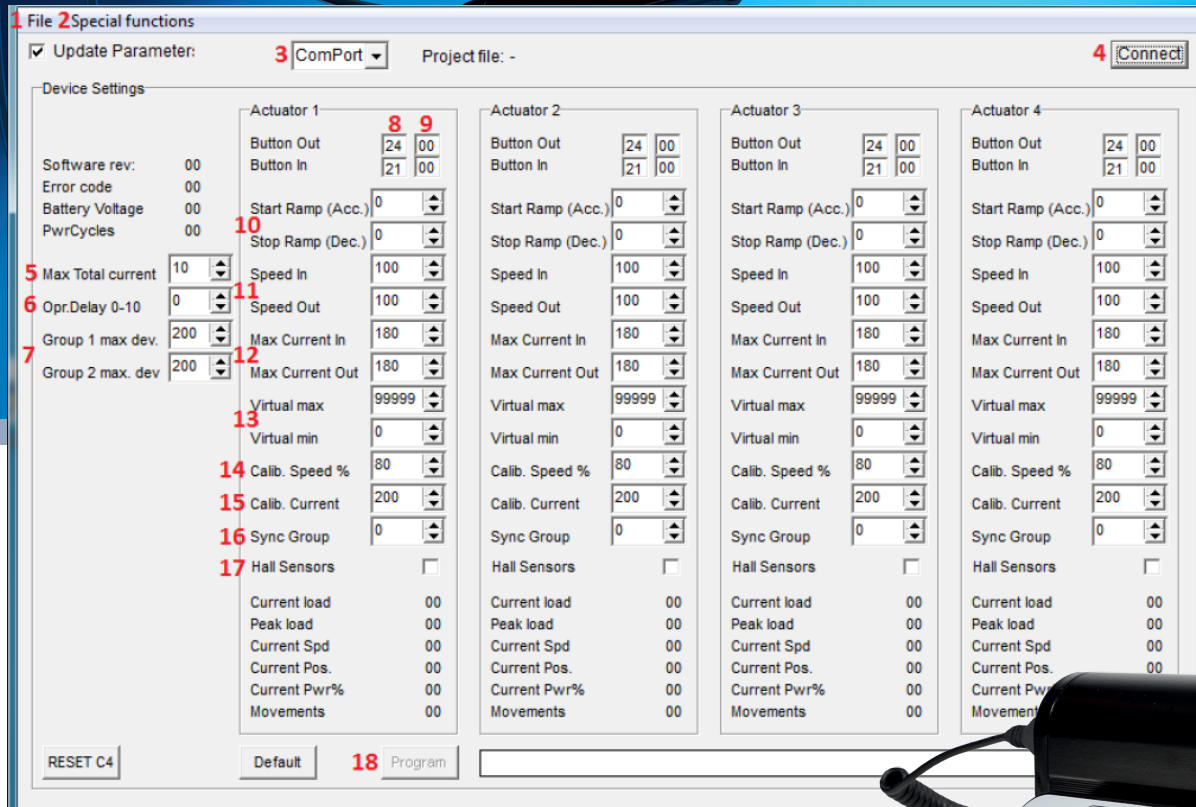


# Controller EEL-S4 Software Guide



## S4 GUIDE FOR SOFTWARE AND PARAMETERS

1. Access to menu for saving and reopening parameter files
2. For Bansbach use only
3. Selecting ComPort address
4. Establish connection between S4 and configuration tool and update position and other values
5. Maximum current for all channels running simultaneously. Maximum is 12Amps
6. Spasm-filter 0 = off – 10 = maximum filtering
7. Adjustment for maximum allowable pulse deviation for motor group 1 and 2. If value is exceeded motors in group stop and needs calibration
8. Selection of button number for normal travel
9. Selection of button number for “sub-group”. Can be used to reset all channels simultaneously. Not same function as “calibration”
10. Sets start and stop ramps 0=no ramp/1=short ramp/2=middle ramp/3=long ramp
11. Adjustment of normal travel speed 100=100% PWM
12. Adjustment of maximum current in either direction 100 = 1 Amp. (refer to datasheet for actuator in question for maximum allowable current)
13. Setting for upper and lower limits measured in pulses. Pulses are calculated by using this formula: stroke x gear ratio/pitch = number of pulses in a full stroke
14. Adjustment for speed during calibration in % of full PWM
15. Maximum current during calibration. Calibration current must never exceed maximum current for actual actuator
16. Choice of group for synchronous travel. No group = blank/group 1 = 1/group 2 = 2
17. Activating hall, Blank = actuator with no hall and tick = actuator with hall
18. Download parameters to S4

The flyer is subject to technical alterations and printing mistakes.

**Bansbach easylift GmbH**

Barbarossastraße 8  
D-73547 Lorch

Tel. +49 (0) 7172/9107-0  
Fax +49 (0) 7172/9107-44

info@bansbach.de  
www.bansbach.de

**Bansbach**  
*easylift*

10/2017